

# Testimonial - Greg Tuttle, DDS

*"I'm a general dentist getting results I never expected. This patient has had a history of failed endos transitioning to implants. He was new to my office, and we treated #29 today. When I see a product, I like, I let people know. Dentists need to have an experience like I have had in the last few weeks. Ever since being introduced to BioRoot Flow...my confidence has increased."*

**Greg Tuttle, DDS 2<sup>ND</sup>**  
**Founder, TuttleNumbNow, LLC**  
**916.769.6695 - tuttlenumbnow.com**

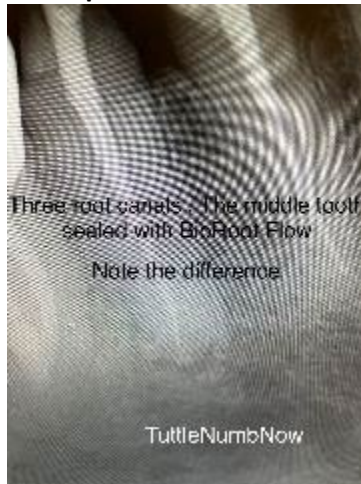
## Single Cone Obturation – Retreatment - Case Report with Radiographs

*Here are the pre-op and post-op radiographs. Notice the comparison of the other root canal I did. It is successful but Bio-root flow outperforms my prior sealer hands down.*

**Pre-op: Tooth #29**



**Post-op: Tooth #29**



**Post-op: Tooth #29**



**Problem:**

The patient presented a history of failed endodontic procedures, transitioning to implants. RCT was needed on we treated Tooth #29.

**Single Cone Obturation:**

Notice the comparison between the three root canals. The middle tooth was sealed with BioRoot® Flow.

**Solution:**

While the other RCT were successful, BioRoot® Flow outperforms the prior sealer.

## Doctor's Quote

"Love it! Finally, an answer for my single cone obturation. No mix no mess great results. Love the flow -not too drippy not too stiff. Excellent consistency. Not as radiopaque as some others (won't hide a broken file) but adequate. Septodont's new Endo sealer is a hit! I received a sample to evaluate, and I won't go back."

*@tuttlenumbnow*

Greg Tuttle, DDS 2<sup>nd</sup>  
Founder, TuttleNumbNow, LLC  
916.769.6695 - tuttlenumbnow.com